



# **Life Sciences Equipment Laboratory (LSEL)**

\*

## **FORENSIC ANALYSIS OF INFORMATION & EVIDENCE**

\*

**13 June 2014**

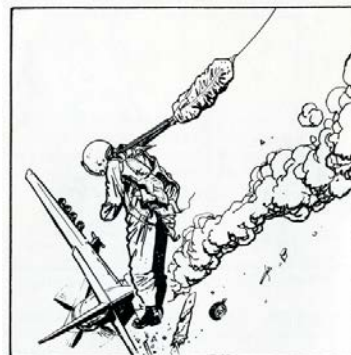
**Mr. John Goines III**

**U.S. AIR FORCE**

---

## • Missions

- Support to DoD POW/MIA accounting mission
- Current day mishap investigation and analysis
- Support for Aircrew Performance Branch's technical and scientific programs





# LSEL TASKING SUPPORT



*AFLCMC... Providing the Warfighter's Edge*







# ANALYSIS OF AIRCRAFT/AIRCREW EQUIPMENT FOR ALL SERVICES FROM WORLD WAR II TO CURRENT DAY OPERATIONS

*AFLCMC... Providing the Warfighter's Edge*







# ACCOUNTABILITY SUPPORT INCLUDES THE IDENTIFICATION OF EQUIPMENT RELATED TO COMBAT GROUND FORCES FROM PAST CONFLICTS



*AFLCMC... Providing the Warfighter's Edge*





## LIFE SCIENCES EQUIPMENT LABORATORY



*AFLCMC... Providing the Warfighter's Edge*

# CASE PROCESSING PROCEDURES



# CASE PROCESSING PROCEDURES

*AFLCMC... Providing the Warfighter's Edge*

## RECONCILIATION TO CUSTODY DOCUMENTS



## PHOTOGRAPHY TO RECORD RECEIPT CONDITION



# CASE PROCESSING PROCEDURES

*AFLCMC... Providing the Warfighter's Edge*

## ARCHIVAL DOCUMENT RESEARCH



## MATERIAL MATCHING AND IDENTIFICATION





# CASE PROCESSING PROCEDURES

*AFLCMC... Providing the Warfighter's Edge*

## MICROSCOPIC ANALYSIS AND IDENTITY CONFIRMATION

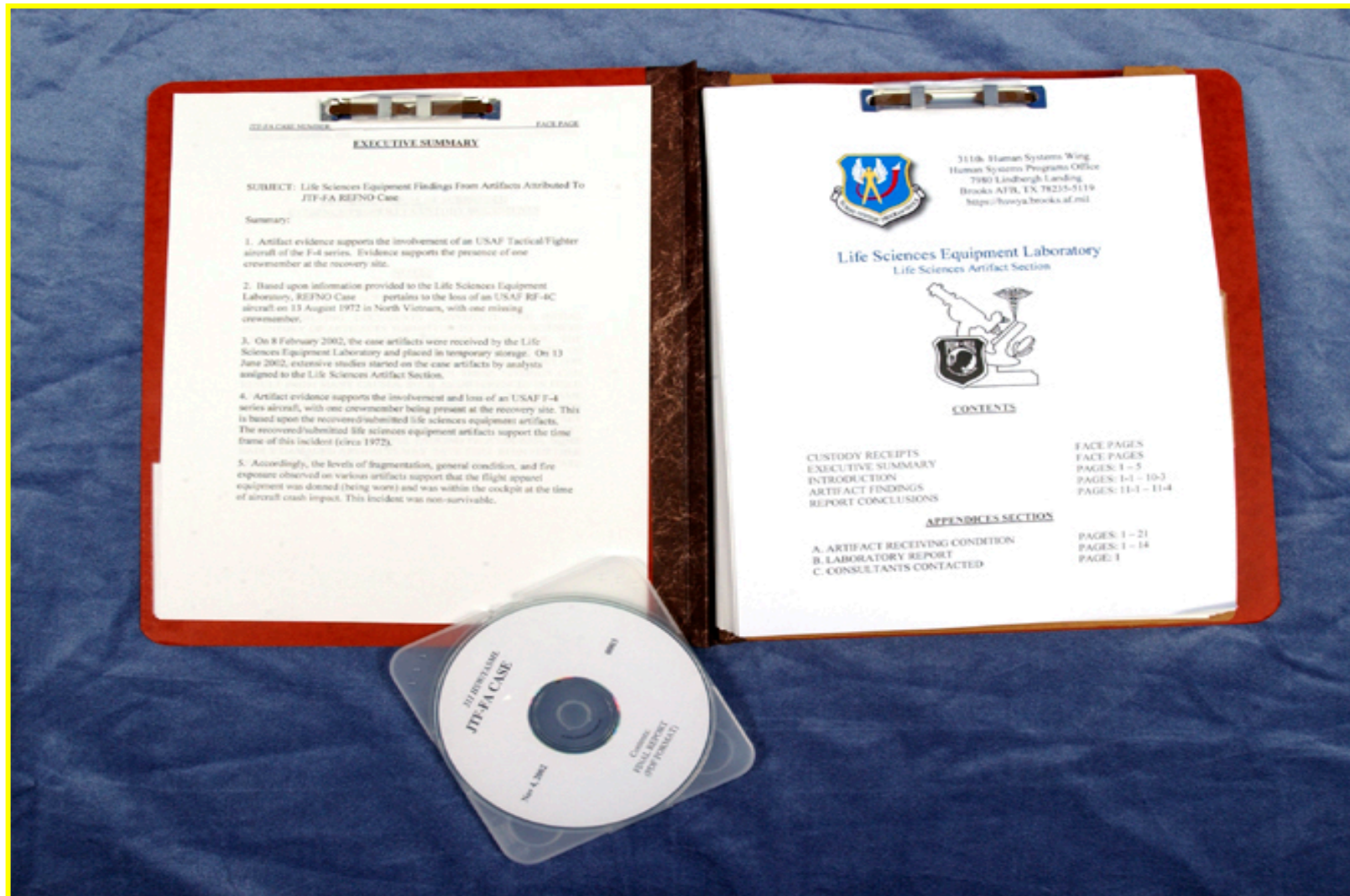


## PHOTOGRAPHY FOR FINAL REPORT COMPILATION



# FINAL REPORT AND CD

*AFLCMC... Providing the Warfighter's Edge*







# LIFE SCIENCES EQUIPMENT LABORATORY

*AFLCMC... Providing the Warfighter's Edge*



# Military Life Sciences Equipment

## *A Powerful Form of Identification*





# QUESTIONS TO BE ANSWERED



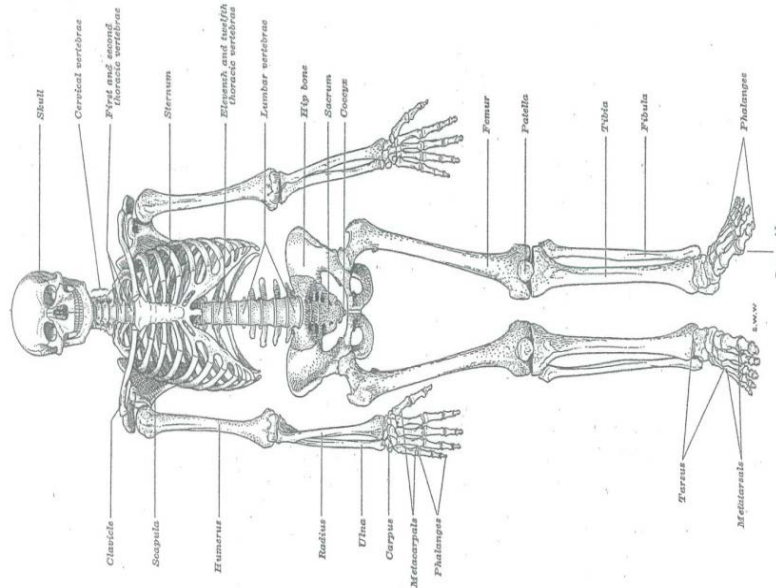
*AFLCMC... Providing the Warfighter's Edge*

- **ARE ARTIFACTS CONSISTENT?**
- **NUMBER OF INVOLVED PERSONNEL?**
- **WAS LOSS INCIDENT SURVIVABLE?**
- **WHAT IS THE TIME PERIOD?**



# RECOVERY OPERATIONS GOAL

*AFLCMC... Providing the Warfighter's Edge*



PRIMARY GOAL



SECONDARY GOAL



# MATERIAL EVIDENCE IDENTIFICATION

*AFLCMC... Providing the Warfighter's Edge*





# MATERIAL EVIDENCE IDENTIFICATION

*AFLCMC... Providing the Warfighter's Edge*







# MATERIAL EVIDENCE IDENTIFICATION

*AFLCMC... Providing the Warfighter's Edge*





# CULMINATION OF LSEL EFFORTS



*AFLCMC... Providing the Warfighter's Edge*



## ACCOUNTING COMMUNITY SUCCESS





# “SUPREME SACRIFICES... WE MUST NEVER FORGET”

*AFLCMC... Providing the Warfighter's Edge*

